

■ Common indicators and targets

Internationalization

Broader exchange at Taki Plaza between local and international students

Tokyo Tech's International Student Support desk moved to Hisao & Hiroko Taki Plaza, the new student exchange hub, and now offers counseling services in Japanese, English, and Chinese. At the new global lounge, students can watch international broadcasts and read international magazines. Since the second half of FY21, students have been able to communicate openly in various languages at the new multilingual chat room, creating additional opportunities for exchange. Cross-cultural exchanges also increased through new events such as the welcome reception for new international students and the English Cafe communication event.



Hisao & Hiroko Taki Plaza

Governance reform

Approaching 150 years of Tokyo Tech—Action Package formulated

As it prepares for its 150th anniversary in 2031, Tokyo Tech formulated its Action Package, a guide that aims to bring about a prosperous future society and sustainable development for the Institute and the world through co-creation with society as Team Tokyo Tech. The Action Package, which is based on Tokyo Tech's desired future direction, includes ambitious and challenging initiatives that will lead to reforms in education, research, and governance, and will be reviewed and implemented on a regular basis.



Front cover of Tokyo Institute of Technology Integrated Report 2021

Tokyo Institute of Technology Integrated Report 2021 published

In line with its goal of gaining recognition as a world-leading science and technology university, Tokyo Tech published Tokyo Institute of Technology Integrated Report 2021 to promote better understanding of its current status and challenges among a wide range of stakeholders, and to advance reforms while engaging in dialogue with society. Through discussions involving the president, executive vice presidents, researchers, students, and external businesspeople and experts, the report covers Tokyo Tech's management strategy, education, research, collaboration with industry, diversity, and other initiatives, and introduces the types of reforms being undertaken. The special feature addresses co-creation with the world and depicts the Institute's efforts and vision to continue global collaboration for the creation of new knowledge.

Education reform

Progress with B2D Scheme

The B2D Scheme, which began in FY19, is Tokyo Tech's original program for bachelor-level students who wish to begin research early and progress swiftly to a doctoral degree. The first 16 participants became 3rd-year students in FY21, and began research one year earlier than usual. Three students graduated early and entered the master's degree program in April 2022. In FY21, 15 new students in the 2nd year also registered, suggesting that the foundations for the scheme are being established steadily.

Institute-wide professional development 2021

An Institute-wide professional development session for faculty members was held online with the aim of systematically improving the quality of education at Tokyo Tech. The overarching theme was "Enhanced student-centered learning: Classroom design and in-lab education in the age of the new normal." The content was designed to deepen and develop the realization of education where students learn and think for themselves, one of the pillars of Tokyo Tech's education reforms which were initiated in FY16.

New learning management system in T2SCHOLA

In order to develop autonomous learners who are actively involved in their own learning, a new learning management system, T2SCHOLA, was launched. This has created an environment where faculty members can utilize online learning content actively and students can learn effectively and efficiently within and outside the classroom.

■ University's own indicators and targets

Rigorous self-inspection and evaluation

With an eye on the end of the Top Global University Project in March 2024, Tokyo Tech reviewed and verified each project-related measure, and identified potential problem areas. A self-assessment report was created for all measures, each of which included three items—progress of measure, status of achievement, and future actions—with a three-level evaluation of achievement status. Further improvements will be made while receiving advice on the results of the self-assessment from external experts in FY22.

The self-assessment report also contains items related to the Designated National University scheme, Tokyo Tech's vision for the future until 2030, demonstrating the Institute's development and its progress throughout the Top Global University Project.

■ Initiatives to enhance international reputation

Tokyo Tech ANNEX Berkeley opens

After the opening of Tokyo Tech ANNEX Bangkok in FY18 and Tokyo Tech ANNEX Aachen in FY19, the Institute opened its third overseas base for international collaboration, Tokyo Tech ANNEX Berkeley, in Berkeley, California in October. Opportunities for collaboration and the creation of joint research topics were sought through research showcases and workshops at these ANNEXes. The opening of the third Tokyo Tech ANNEX further strengthens the Institute's international communications and enhances the global reputation of Tokyo Tech.



Tokyo Tech ANNEX Berkeley

Tokyo Tech Global Webinars series kicks off

The Tokyo Tech Global Webinar Series was launched to recognize and continuously promote the value of exchanges with overseas and domestic universities, research institutions, etc. even under the restrictive circumstances caused by COVID-19. Through online symposiums and webinars in this series, Tokyo Tech shared its research achievements and new initiatives regarding science and technology and international cooperation, and explored the nature of education and research in the post-COVID-19 era.

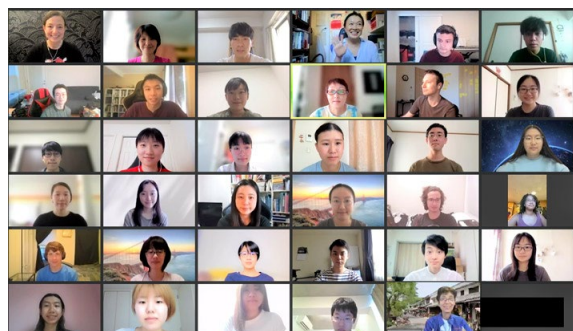
【Results of collaboration with overseas universities】

Global Leadership Practice course 2021 with Georgia Tech held

The 2021 Global Leadership Practice, an intensive course held since FY18, took place from June 15 to 25 in partnership with Georgia Institute of Technology (Georgia Tech), a partner university of Tokyo Tech. Fifteen students participated in the online sessions. The advanced preparations and sessions themselves utilized various tools and the support of teaching assistants to create a motivating learning environment. With a focus on group work, the classes allowed participants from diverse cultural backgrounds to conduct fruitful discussions while practicing multicultural teambuilding.

Continued collaboration with MIT

The School of Engineering, the School of Materials and Chemical Technology, and the School of Environment and Society renewed their student exchange agreement with the Department of Nuclear Science and Engineering at the Massachusetts Institute of Technology (MIT). With this update, the exchange between the counterparts was promoted to an official program in FY21. Collaboration also continued through the Tokyo Tech-MIT Japan Language Exchange Program, which was held for the second time in July-August and joined by 22 Tokyo Tech students and 22 MIT Japan students. The program allowed participants to enhance their second-language communication skills while discussing different cultures and ideas with their diverse counterparts.



Tokyo Tech-MIT Japan Language Exchange Program

New doctoral program with RWTH Aachen

After the birth of Tokyo Tech ANNEX Aachen, a new co-supervised doctoral program was launched in addition to the existing exchange program with RWTH Aachen. Under this new program, students enrolled in the doctoral program at Tokyo Tech stay at RWTH Aachen for at least six months, in principle, to receive research guidance from RWTH Aachen faculty members, and vice versa. The program is designed to broaden students' global perspectives by providing them with international experience, and to encourage them to engage in collaborative research with overseas counterparts.

On the research front, joint online workshops in areas such as hydrogen energy and smart wearables provided great opportunities for Tokyo Tech and RWTH Aachen researchers to inspire and engage with each other.

■ Free description

Enhanced information sharing with prospective international students

Tokyo Tech's website for prospective students was fully renewed to improve access to information regarding education at the Institute. My Tokyo Tech, an English video series featuring current international students who talk about various topics such as research, dorm and student life, and the highlights of their stay in Japan, was also launched on the Tokyo Tech YouTube channel and Discover Tokyo Tech, an English website aimed at prospective international students. The series currently contains seven videos, all created with the student's perspective in mind. The Institute will continue to launch videos that provide inside views into the current life of Tokyo Tech students.



My Tokyo Tech video series